

District of Squamish

Planning for Safe Development in the Floodplain

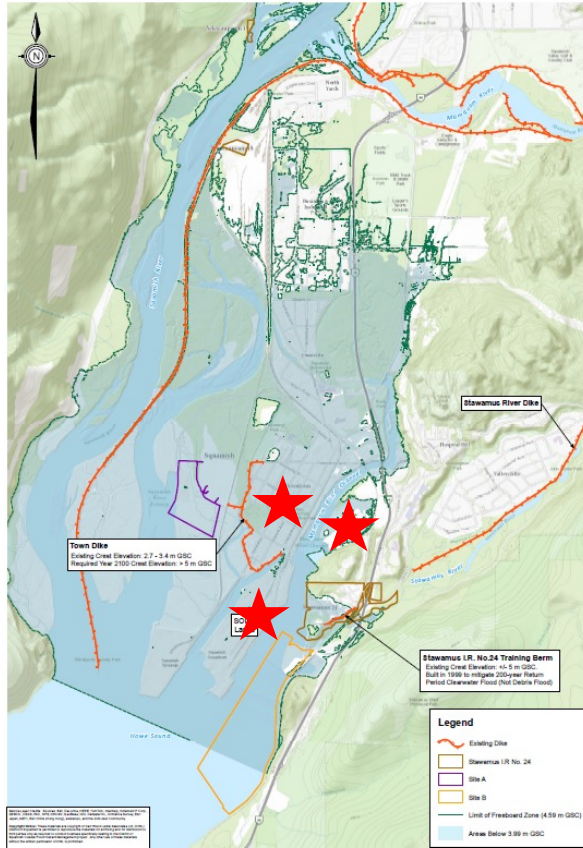
September 2023



Squamish's Flood Hazards



Integrated Flood Hazard Management Plan



Objectives

Equitably reduce
flood risk

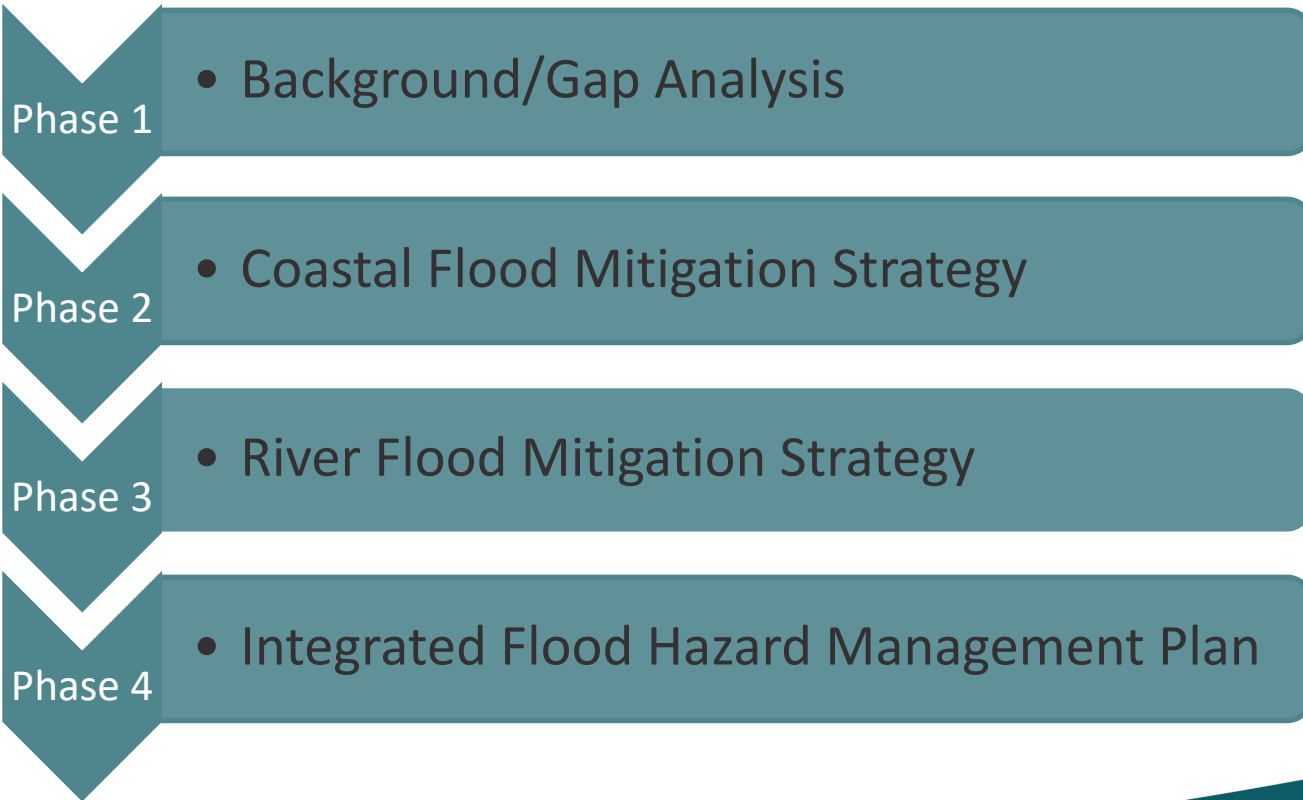
Identify development
opportunities

Integrated Flood Hazard
Management Planning

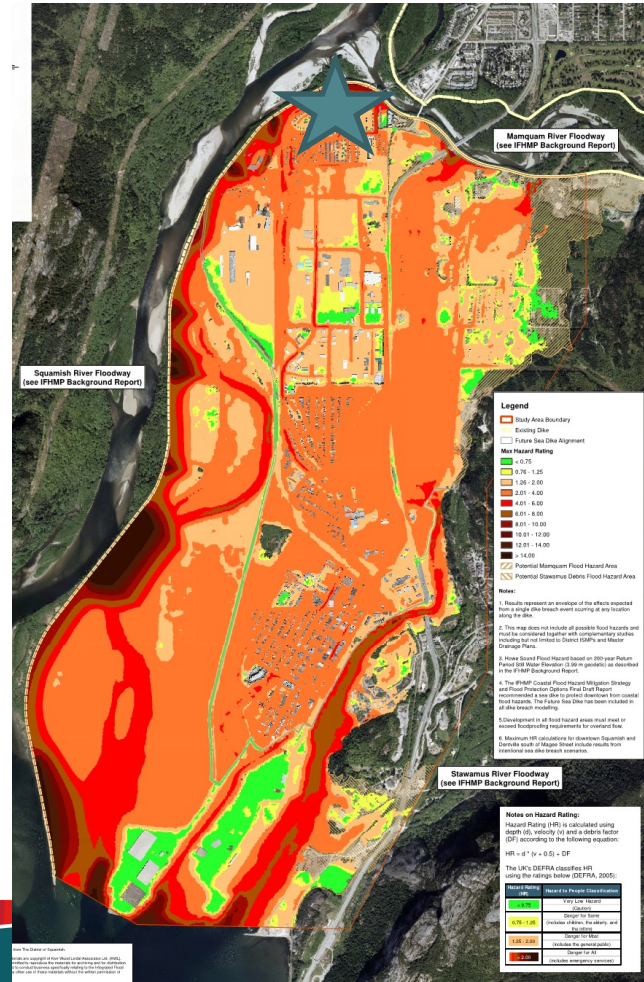
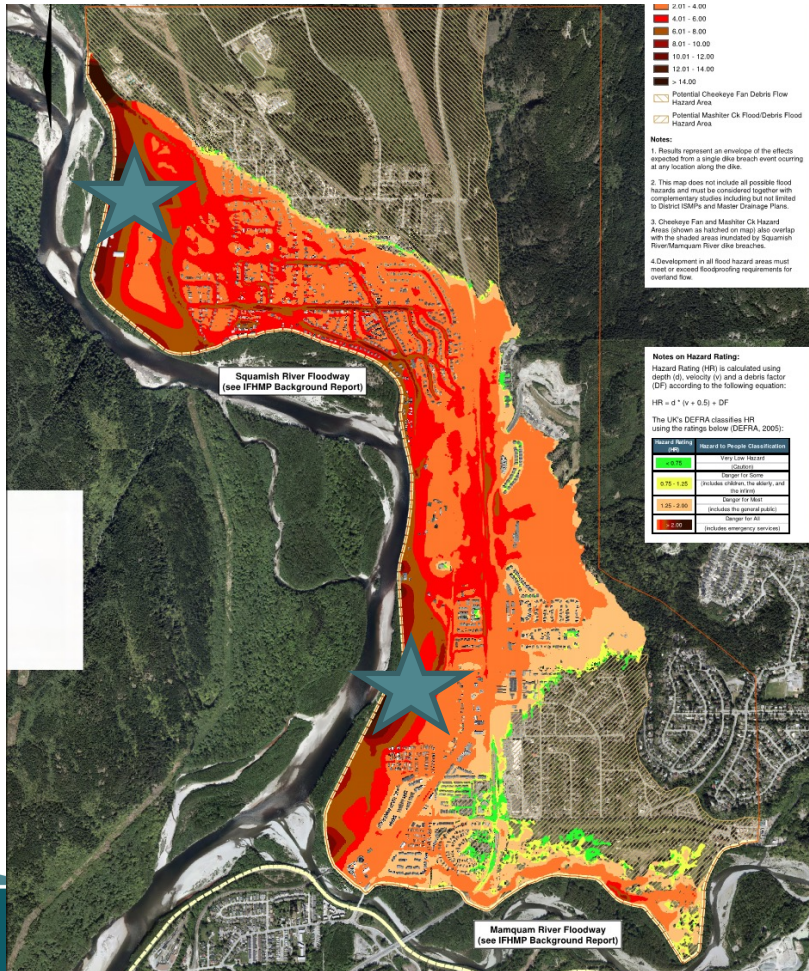
Promote sustainable
decisions

Create community
supported solutions

Integrated Flood Hazard Management Plan

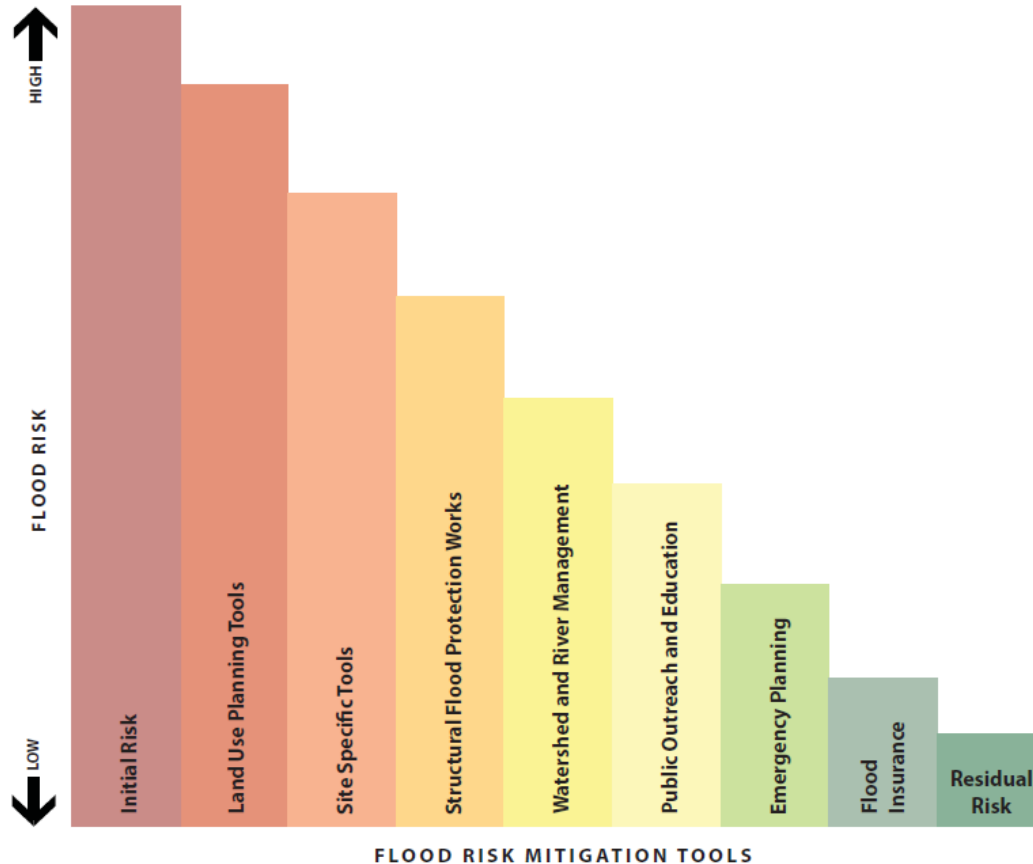


Floodplain Mapping – Hazard Rating



Risk Mitigation Strategies and Tools

Flood Risk Mitigation: Buying Down the Risk



Adapted from: United States Army Corps of Engineers (Riley, 2008)

Mitigation Strategy Overview

Limit Densification in High Hazard Areas

Discourage densification through rezoning



Improve Dike Protection

Address deficiencies and adopt a higher standard of protection



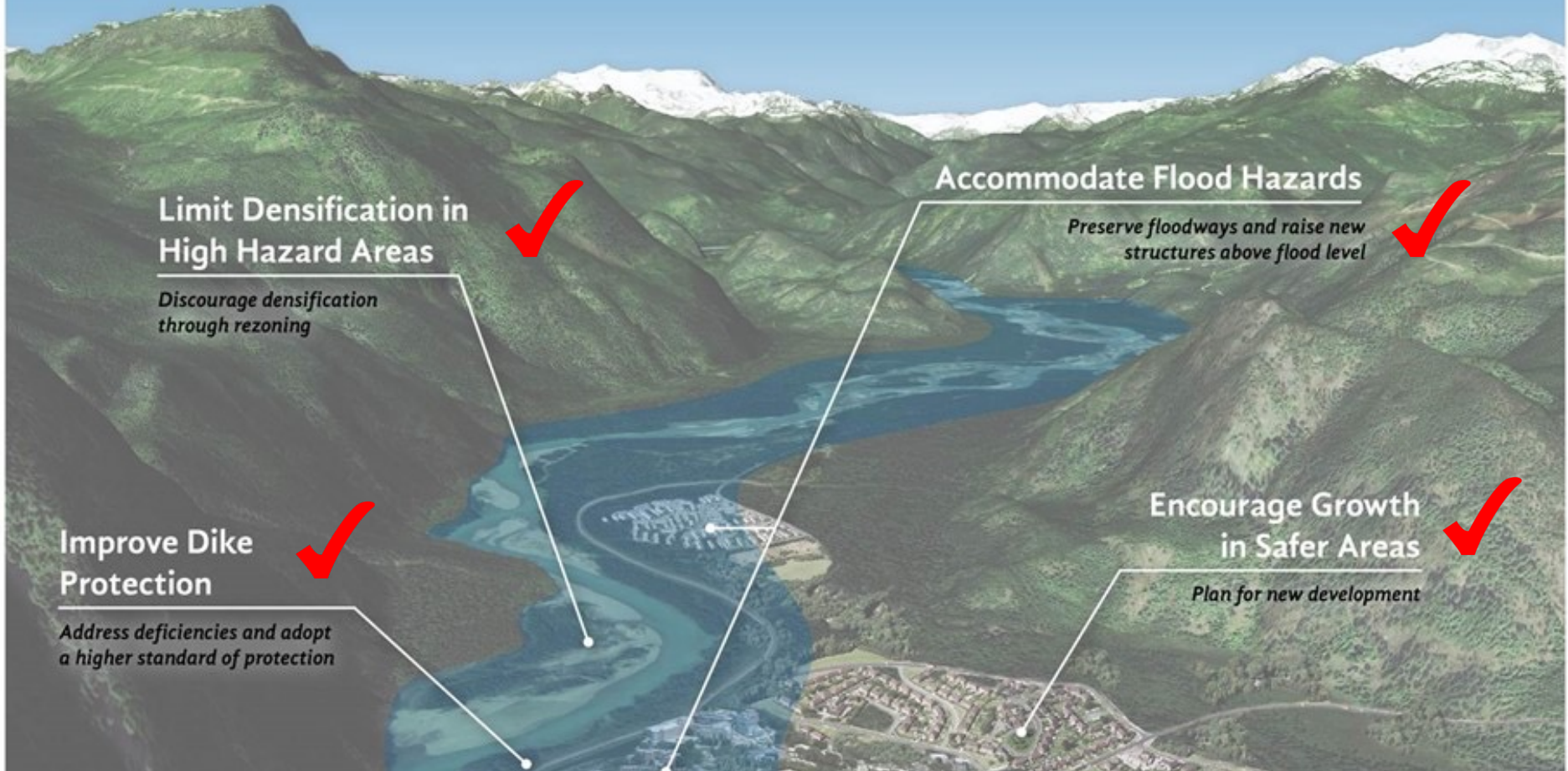
Accommodate Flood Hazards

Preserve floodways and raise new structures above flood level

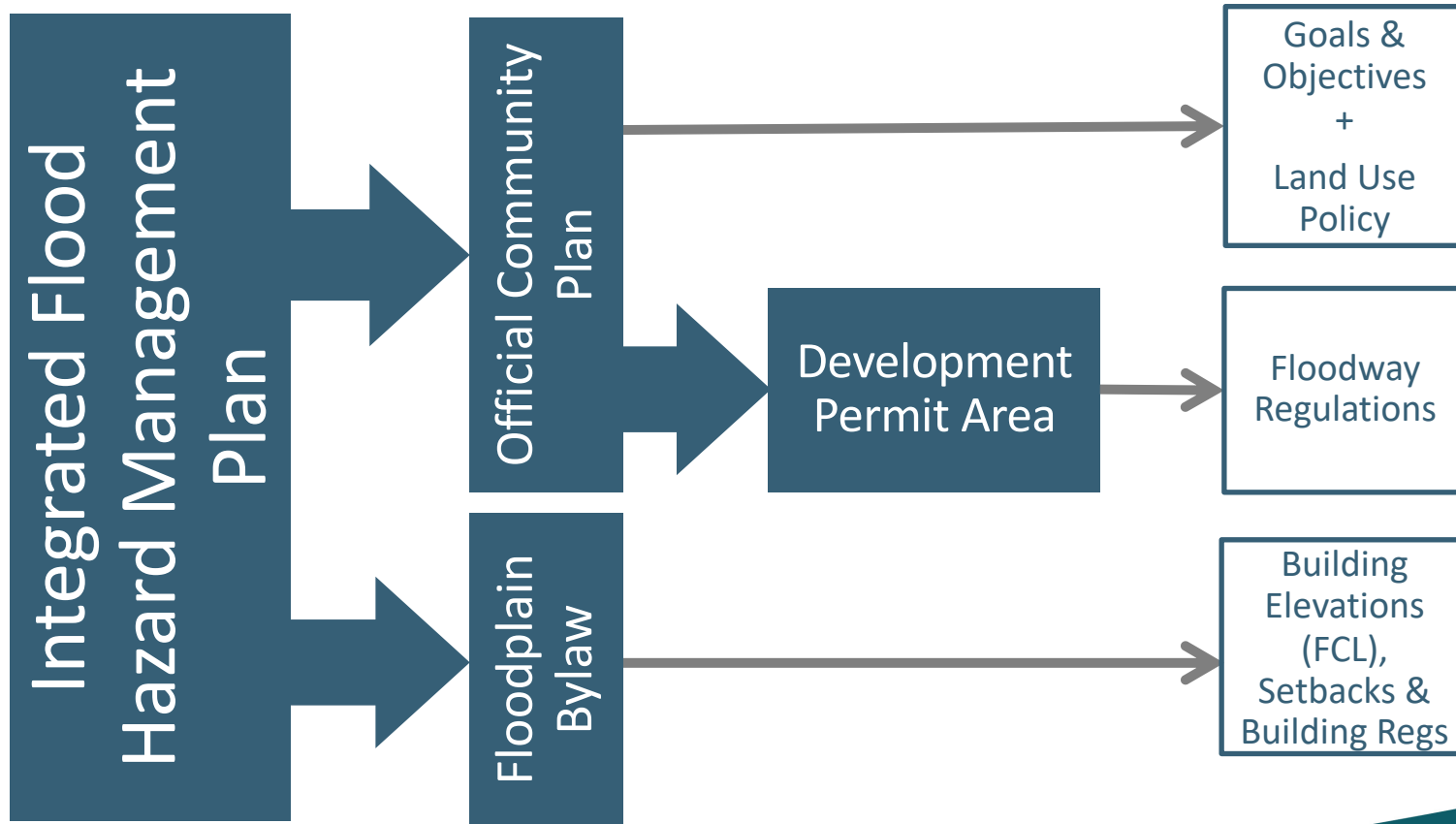


Encourage Growth in Safer Areas

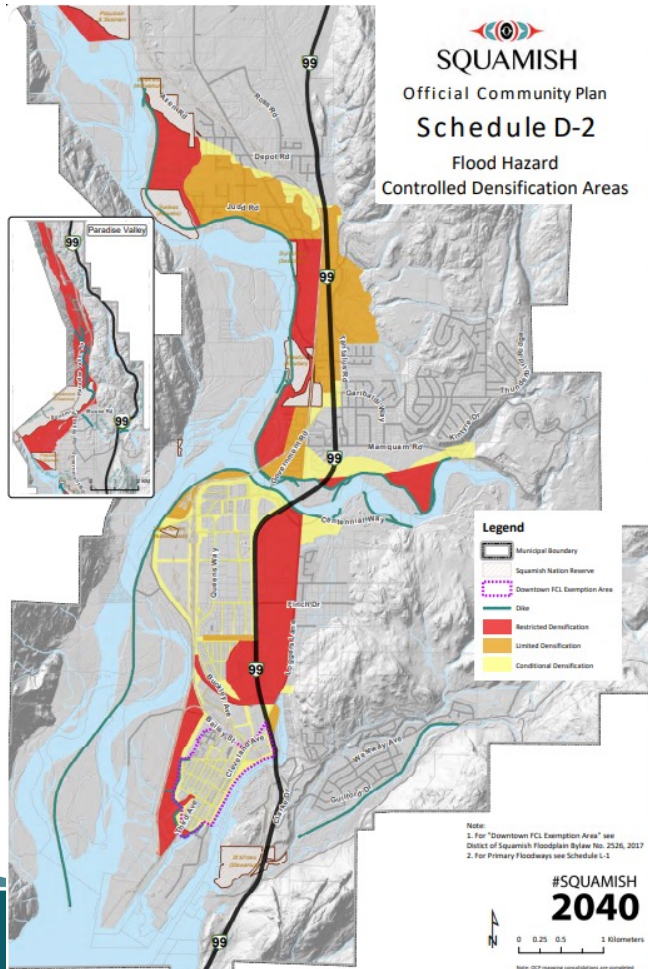
Plan for new development



Flood Management Development Policy



Controlled Densification Areas

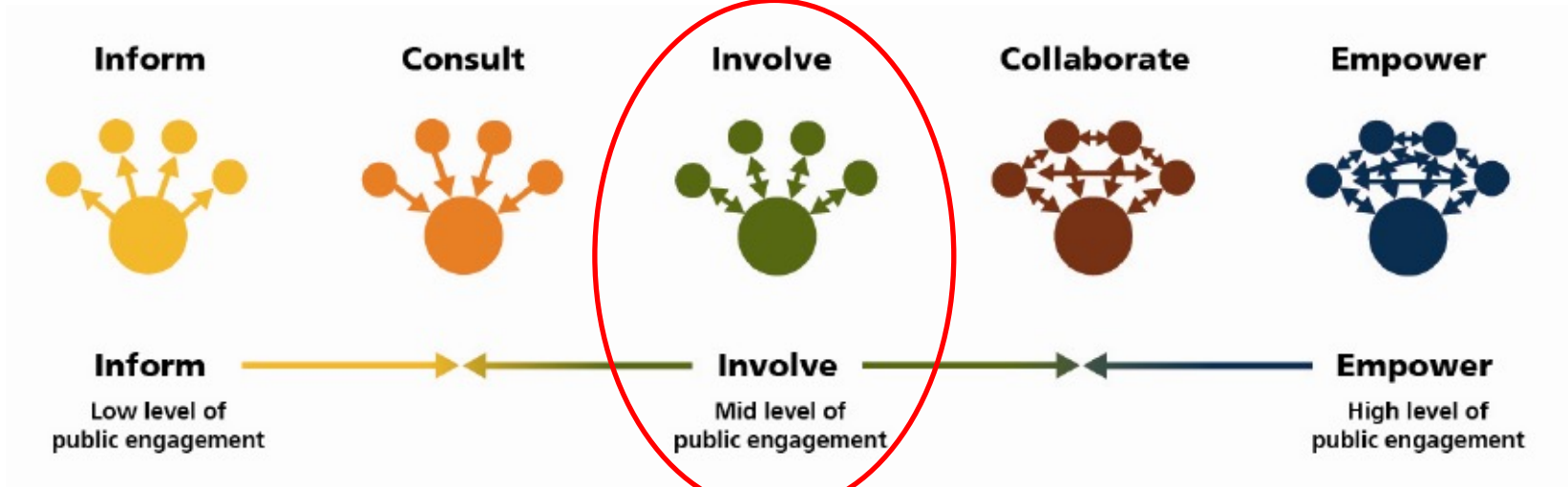


Restricted Densification Area –
highest risk areas where rezoning for more intensive land use is not supported

Limited Densification Area –
high risk area where specific conditions must be met to support rezoning, density limited to duplex density

Conditional Densification Area –
moderate risk area conditions must be met to support rezoning

Community Engagement



Activities

- 3 Public Open Houses
- 3 Online Surveys
- 6 Technical Working Group Meetings
- 10+ Council Meetings
- 10+ Stakeholder Workshops

Lessons Learned

An aerial photograph of a mountainous landscape. In the foreground, a large, rugged rock formation with vertical fissures dominates the left side. Below it, a dense forest of evergreen trees covers the slopes. A winding road or path is visible through the forest. In the middle ground, a large, calm body of water, possibly a bay or a wide river, stretches across the center. The water is a deep blue color. In the background, several layers of mountain ranges are visible, each progressively more hazy and blue-tinted, creating a sense of depth. The sky is a pale, clear blue.

- Use “Integrated” approach
- Think long-term
- Resource appropriately



Questions/Discussion



KERR WOOD LEIDAL
consulting engineers



SNC • LAVALIN

